

TEST #14

IFI 9 Gauge 2" Weave Chain Link Fence | One-person cut through utilizing wire cutters

Description: This was a one-person test utilizing off-the-shelf wire cutters to penetrate the chain link fence in a straight, vertical line. Time was started when the person began to cut the fence and stopped when the person successfully climbed through to the other side of the fence.

Results: Successful penetration in 31 seconds.

Issue(s): None noted

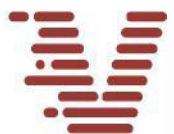


TEST #15

IFI-6 Extreme Cut 6 Gauge 5/8" Weave Chain Link | one person cut-through utilizing wire cutters

Description: This test involved one person utilizing wire cutters to breach the chain link weave fence. The attacker cut down a straight line to allow passage to the other side of the fence. The test started when the tool first touched the fence and ended when the attacker breached to the other side. Results: Successful penetration in 6 minutes and 49 seconds.

Issue(s): The nature of the wire weave meant that successfully cut pieces provided an additional, continuing impediment to the attack.



TEST #16

IFI 9 Gauge 2" Weave Chain Link Corner | One person cut-through utilizing bolt cutters

Description: This test involved one person utilizing bolt cutters to cut down the corner of the fence to allow access to the other side. The test started when the bolt cutters first touched the fence and ended when the attacker arrived on the other side.

Results: Successful penetration that took 27 seconds.

Issue(s): None noted



TEST #17

IFI-6 Extreme Cut 6 Gauge 5/8" Weave Chain Link Corner | One-person attack utilizing bolt cutters

Description: This test involved one-person cutting through 6 Gauge 5/8" weave chain link fence wrapped around a corner post. The attacker cut down in a vertical line, removing enough material to eventually allow a successful breach. The test started when the bolt cutters first touched the fence and ended when the attacker was successfully through to the other side.

Results: Successful cut-through that took 6 minutes and 27 seconds.

Issue(s): As with the cut links in the previous test, successfully cut pieces continued to provide an impediment to successful breach, causing the attacker to manually remove the pieces in order to continue cutting.

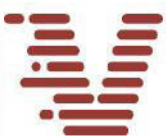
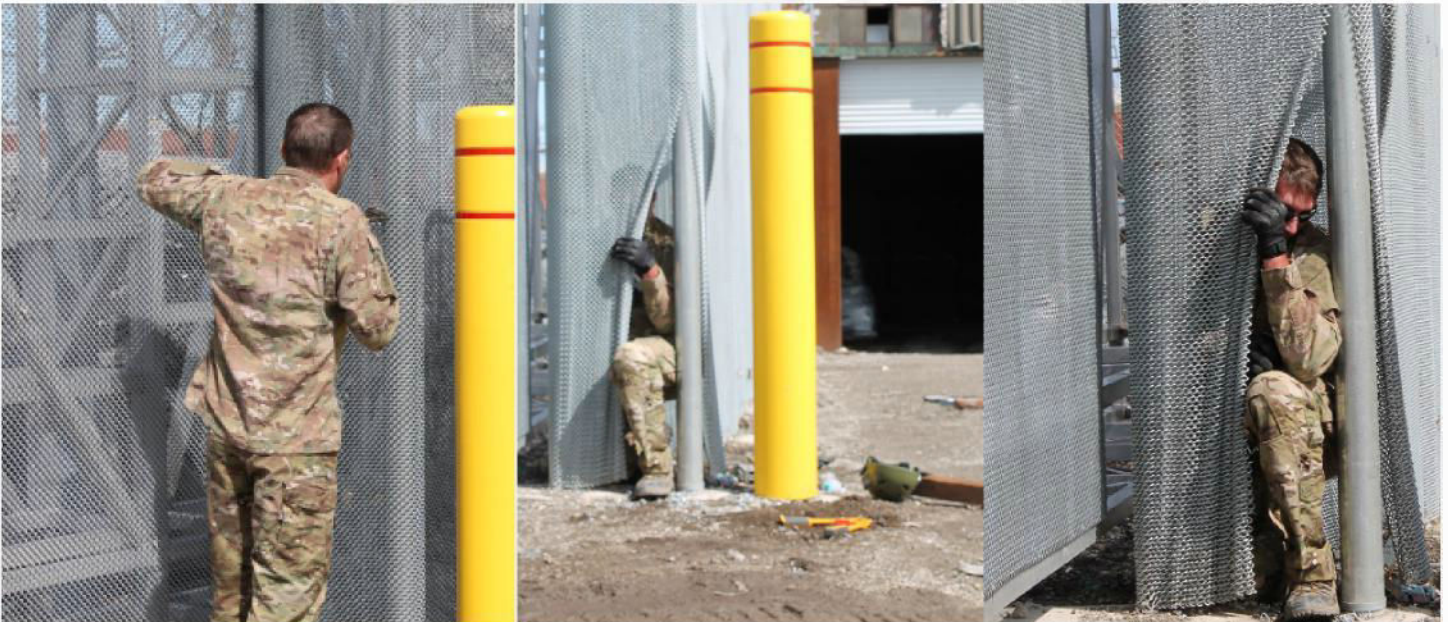
TEST #18

IFI 9 Gauge 3/8" Weave Chain Link Corner | One-person cut-through with bolt cutters

Description: This was a one-person test utilizing bolt cutters to penetrate through the 9 Gauge weave fence wrapped around a corner post. The attacker cut in a vertical line to allow entry to the other side of the fence. The test started when the bolt cutters were placed on the fence and stopped when the fence was successfully breached by the attacker.

Results: Successful breach in 2 minutes and 47 seconds

Issue(s): Cut pieces of weave fence provided additional impediment to breach.



TEST #19

9 Gauge 3/8" Weave Chain Link | One-person attack utilizing wire cutters

Description: This was a one-person attack utilizing off-the-shelf wire cutters to penetrate 9 gauge 3/8" weave fence. The attacker cut a vertical line through the fence, eventually allowing successful pass-through. The test started when the attacker placed the wire cutters on the fence and ended when successful breach occurred to the other side.

Results: Breach of fence in 4 minutes 32 seconds.

Issue(s): Cut pieces of weave fence provided additional impediment to breach.



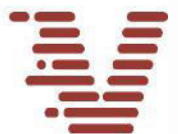
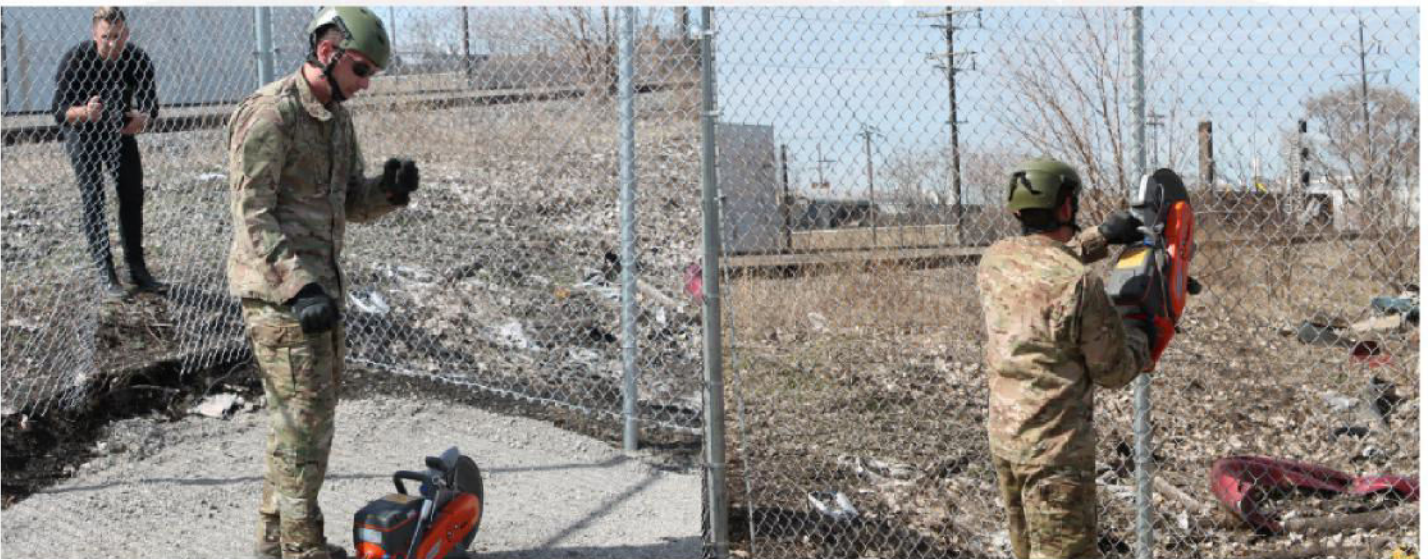
TEST #20

IFI 9 Gauge 2" Weave Chain Link | One person cut-through utilizing gas powered "Quickie" saw

Description: This test involved one person utilizing a gas powered saw to cut a vertical entrance in the fence. The test started when the saw touched the fence and ended when the attacker was successfully through the barrier.

Results: Successful breach in 19 seconds

Issue(s) none noted



TEST #21

IFI-6 Extreme Cut 6 Gauge 5/8" Weave Chain Link | One-person cut-through with gas powered "Quickie" saw

Description: This test involved one-person cutting through 6 Gauge 5/8" weave chain link fence with a gas powered saw. The attacker cut down in a vertical line, creating an opening that allowed a successful breach. The test started when the saw first touched the fence and ended when the attacker was successfully through to the other side.

Results: Successful cut-through that took 41 seconds.

Observation: The saw did not produce the same cut links that provided additional impediment using hand tools.

Issue(s): The gas powered cut-off saw was very loud and caused sparks and smoke that may be detected by security cameras.



TEST #22

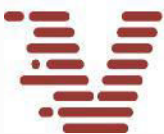
IFI 9 Gauge 3/8" Weave Chain Link | One-person cut-through utilizing gas powered "Quickie" saw

Description: This test involved one attacker and a gas powered saw. The attacker cut a vertical opening in the mesh fence large enough to allow passage of a person through to the other side. The test started when the saw first touched the fence and ended when the attacker was successfully through to the other side.

Results: Successful cut-through in 38 seconds.

Observation: None noted

Issue(s): The gas powered cut-off saw was very loud and caused sparks and smoke that may be detected by security cameras.



TEST #23

9 Gauge 2" Weave Chain Link | One-person cut-through utilizing 36V battery operated grinder

Description: This was a one-person test utilizing a battery powered grinder to cut a vertical opening in 9 gauge fence. The test started when the grinder first touched the fence and ended when the attacker was successfully through the opening to the other side.

Results: Successful penetration took 27 seconds.

Issue(s): As with the gas powered saw, the battery grinder produced a large amount of sparks that could have been detected by a security camera.

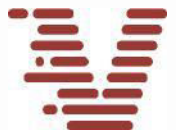
TEST #24

IFI-6 Extreme Cut 6 Gauge 5/8" Weave Chain Link | One person cut-through utilizing 36V battery operated grinder

Description: This test involved one attacker utilizing a battery operated grinder to cut a vertical opening through 6 gauge 5/8" weave chain link fence. The test started when the grinder first touched the fence and ended after the attacker successfully breached the opening.

Results: Successful penetration in 6 minutes and 1 second.

Issue(s): Grinder produced large amount of highly visible sparks.





TEST #25

IFI 9 Gauge 3/8" Weave Chain Link | One-person attack utilizing 36V battery operated grinder

Description: This test involved one-person cutting through 9 Gauge 3/8" weave chain link fence. The attacker cut a vertical line large enough to allow passage of a person through the fence. The test started when the grinder first touched the fence, and ended when the attacker was successfully through the opening.

Results: Successful cut-through that took 4 minutes and 8 seconds.

Issue(s): Grinder produced a large amount of highly visible sparks.



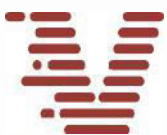
TEST #26

9 Gauge 2" Weave Chain Link | One-person Broco Torch attack

Description: This was a one-person attack utilizing a Broco Torch against a 9 gauge chain link fence. Although this is considered a one-person test, an assistant did provide extra torch rods when spent, and poured water on the fence to cool it after successful penetration. The attacker used the torch to create a vertical opening in the fence. The test started after the torch was lit and ended when the attacker successfully climbed through to the other side.

Results: Successful breach in 1 minute and 26 seconds.

Issue(s): Broco Torch produces a large amount of highly visible sparks and smoke, likely detectable by security cameras or people in proximity to the tool being used.





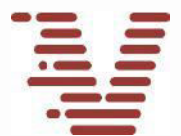
TEST #27

IFI-6 Extreme Cut 6 Gauge 5/8" Weave Chain Link | One-person attack utilizing Broco Torch

Description: This was a one-person attack utilizing a Broco Torch against IFI 6 gauge 5/8" chain link weave. The attacker used the torch to create a vertical opening in the fence, which was then cooled with water before penetration. The test started immediately after the torch was lit and ended when the attacker was successfully through the opening.

Results: Successful breach in 3 minutes and 58 seconds

Issue(s): Broco Torch produces highly visible sparks and gas.





TEST #28

IFI 9 Gauge 3/8" Weave Chain Link | One-person attack utilizing Broco Torch

Description: This test involved one person utilizing a Broco Torch in order to penetrate a 9 gauge 3/8" weave fence with a vertical cut. The test started after the torch was lit and ended after the attacker successfully breached through to the other side of the fence.

Results: Successful breach in 2 minutes and 26 seconds.

Issue(s): Broco Torch produces a large amount of highly visible sparks and smoke, likely detectable by security cameras or people in proximity to the tool being used.

PHYSICAL PROTECTION SYSTEM

CERTIFICATION

